

Boardwalk

Ashton Gate Road

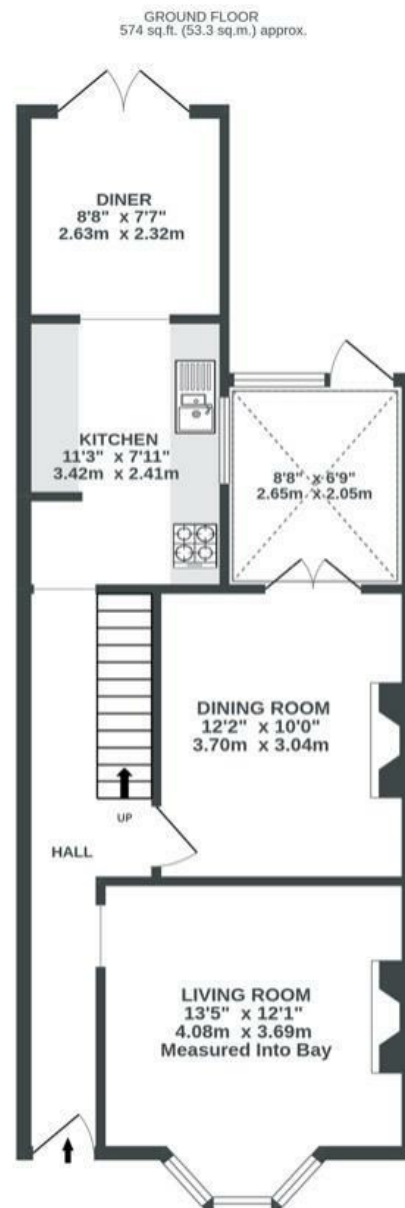
SOUTHVILLE

APPROXIMATE FLOOR AREA
117.8 SQM / 1268 SQFT

BOOK A VIEWING

01179 898 222

hello@boardwalkpropertyco.com



Illustrations are for reference purposes only, measurements are approximate, not to scale.

Boardwalk

Ashton Gate

SOUTHVILLE, BRISTOL

£

£535,000



Bristol, BS3

157

zzz

3 Bedrooms



2 Bathrooms

"We've loved turning this house into a home. We love using the log burner and fireplace in the winter and the garden hosts amazing flowers and fruits in the summer. Some local amenities we will miss sorely is the amazing bakery Marks Bread 30s seconds from our front door. The park is just around the corner for a small walk but then so easy to take a longer walk into Leigh woods or Ashton court during the weekend. This is the best place we have lived and are very sad to see it go."

